

Primary 6 Mathematics Curriculum Briefing

June Chong
Subject Head, Mathematics



Outline

- Mission
- P6 Math Curriculum
- Approach to Teaching & Learning
- Assessment
- How to support your child



Mission

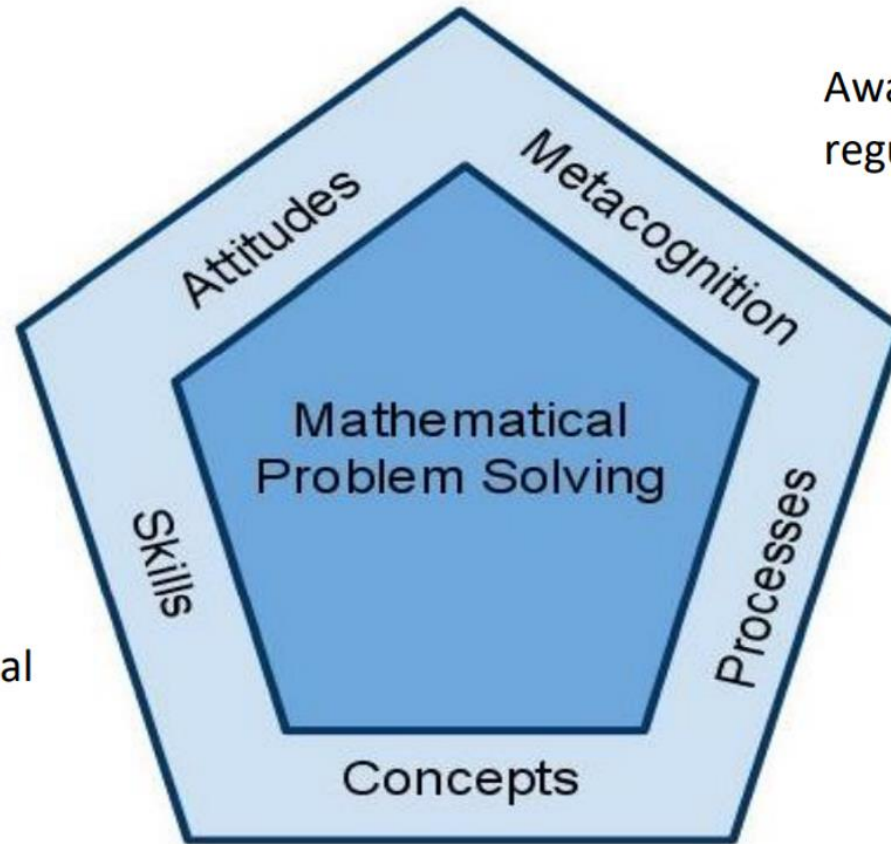
To develop our pupils with **mathematical concepts** and **skills** for everyday life and to equip them with **process skills to solve mathematical problems.**



Mathematics Curriculum Framework

Belief, appreciation,
confidence, motivation,
interest and perseverance

Proficiency in carrying out
operations and algorithms,
visualising space, handling
data and using mathematical
tools



Awareness, monitoring and
regulation of thought processes

Competencies in abstracting
and reasoning, representing
and communicating,
applying and modelling

Understanding of the properties and
relationships, operations and
algorithms



Topics in P6 Standard Mathematics

Fractions	Pie Chart
Ratio	Speed
Percentage	Algebra
Circles	Volume
Geometry	Solid Figures and Nets



Topics in P6 Foundation Mathematics

Fractions	Area of Triangles
Decimals	Triangles, Squares and Rectangles
Percentage	Pie Charts
Average	Volume



Teaching & Learning

- 10 periods of Math per week
- Use of Concrete – Pictorial – Abstract approach
- Learning experiences



Teaching & Learning @RGPS



Fraction Discs



3-D solids

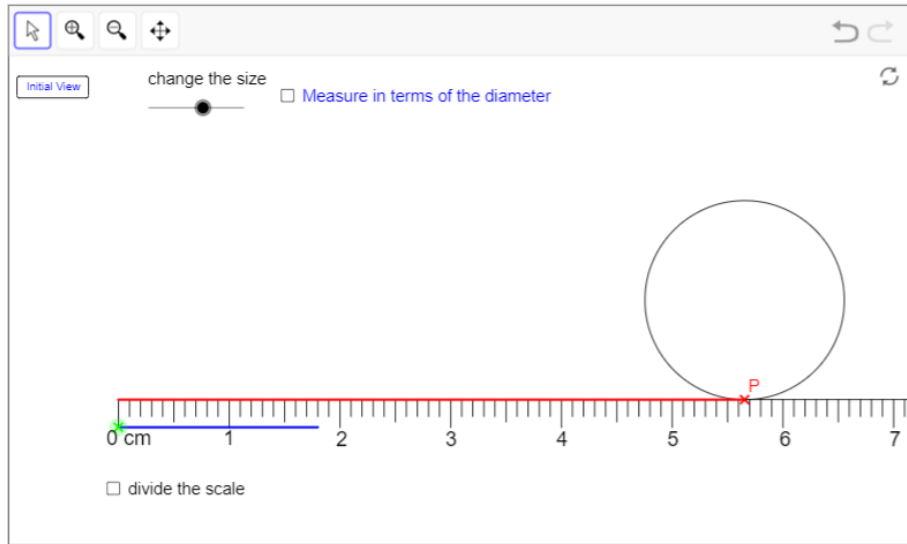


Nets

Teaching & Learning @RGPS – Experiential Learning



Teaching & Learning @RGPS – ICT Enriched Lessons



The actual value is represented by π , which is read as pi.
 π is given by $\frac{22}{7}$ which is about 3.14.

So,

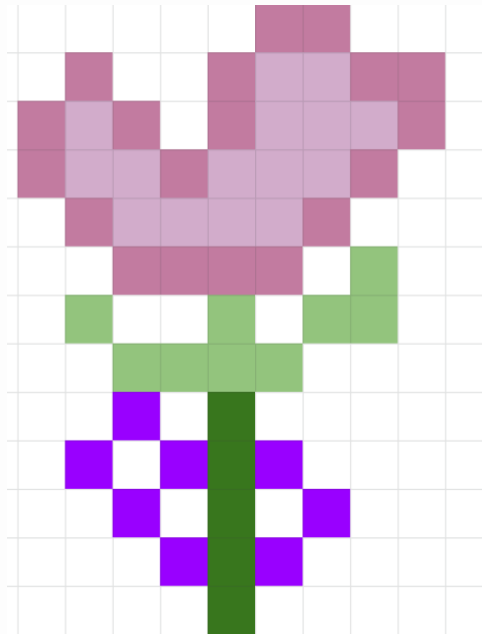
**The circumference of any circle =
 $\pi \times \text{Diameter}$**



	A	B	C	D
1	Names:	Diameter	Circumference	Circumference ÷ Diameter
4	Grace	1.5	4.7	3.13
5	Melanie	1.4	4.4	3.14
6	Sasha	1.7	5.3	3.12
7	Erina	1.1	3.5	3.18
8	Irdina	2.6	8.2	3.15
9	Tian Yi	1.2	3.8	3.17
10	Arra	1	3.1	3.10
11	Abeerah	1.2	3.8	3.17
12	Anaya	1.7	5.3	3.12
13	Cheryl	1	3.1	3.10
14				



Teaching & Learning @RGPS – ICT Enriched Lessons



Total number of squares shaded: 48

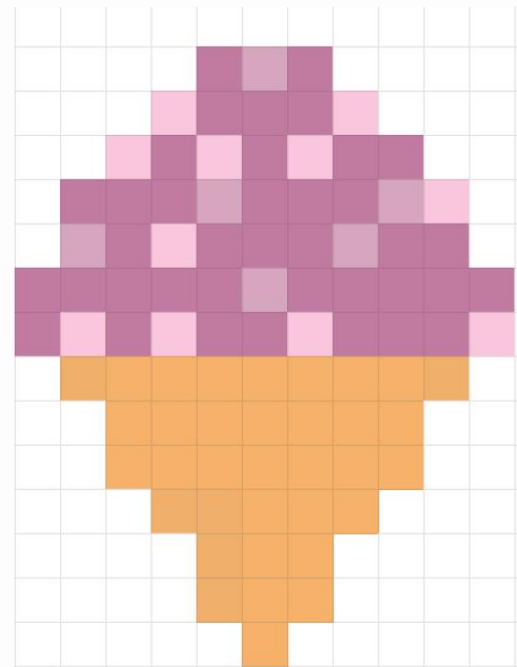
Total number of squares shaded dark pink: 19

Total number of squares shaded light pink: 15

Total number of squares shaded light green: 14

Total number of squares shaded dark green: 5

- 1) What percentage of the flower is dark pink?
Ans: 39.6%
- 2) If I add 8 more dark purple squares, what is the increase in percentage?
Ans: 16.7%
- 3) What percentage of total number squares is light pink?
Ans: 31.3%



Number of dark pink squares: 38

Number of pink squares: 11

Number of grey-pink squares: 6

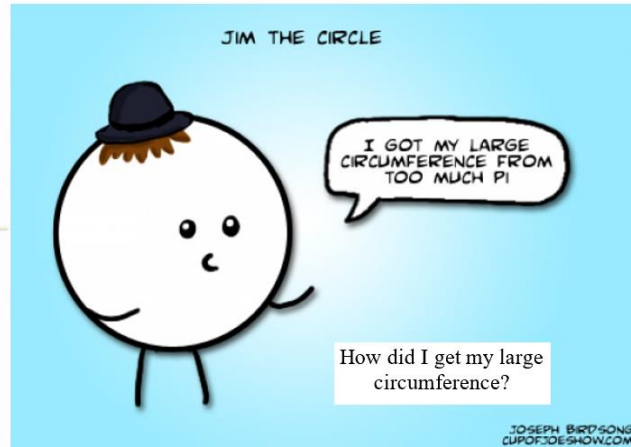
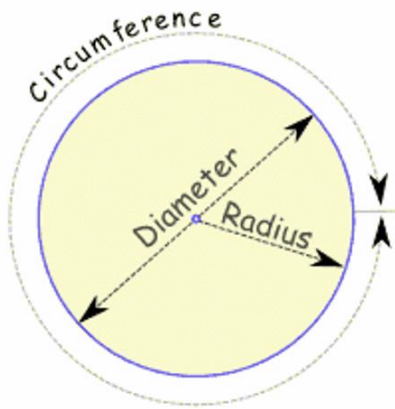
Number of brown squares: 35

- 1) Find the percentage of the number of grey-pink squares.
****round your answer to 2 decimal places.***
- 2) If I add 12 more brown squares, what will the percentage of the brown squares be at the end?
****round your answer to 2 decimal places***

Using excel to find percentages and percentages change

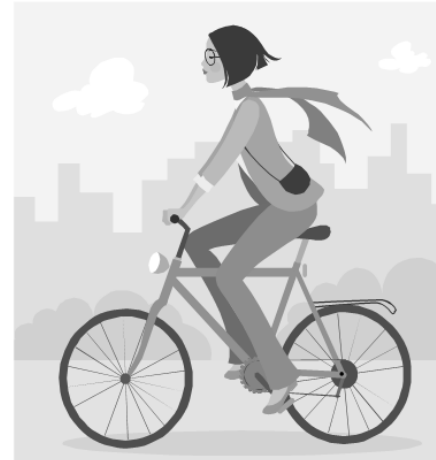


Teaching & Learning @RGPS – Heuristics Skills



CIRCLES BOOKLET

S/N	Key Concept	
1	Circumference	
2	Area (Composite figures)	
3	Overlapping	
4	Cut-and-Paste	

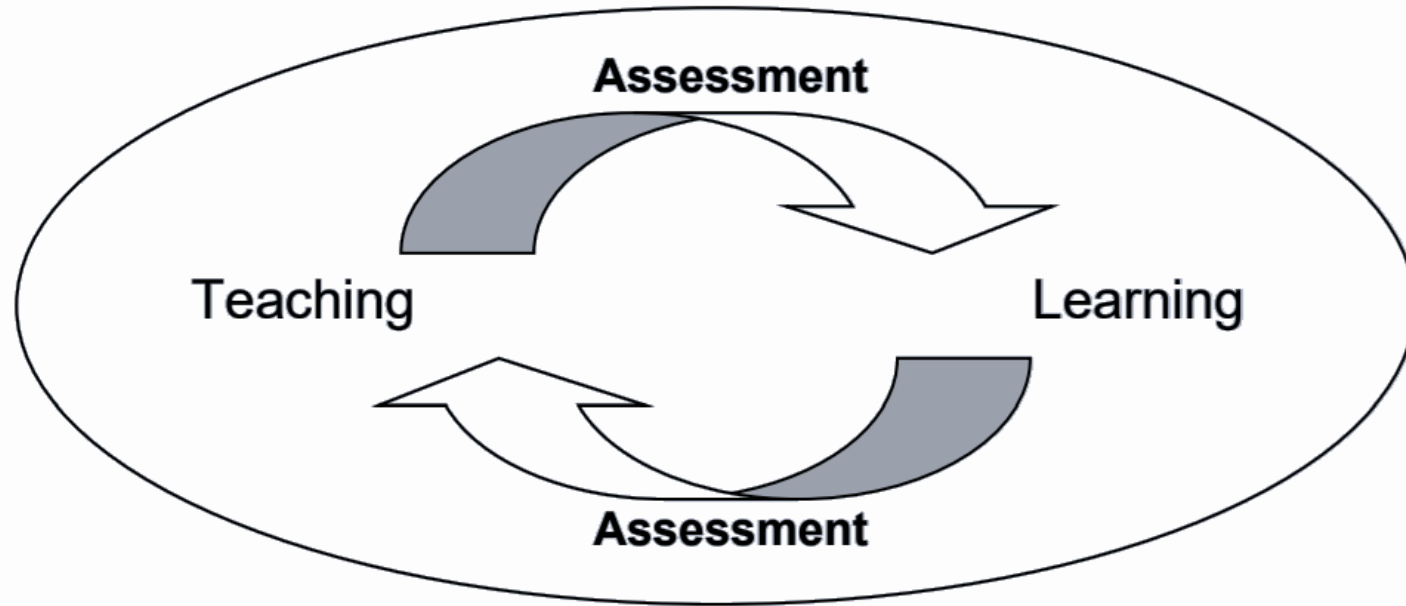


SPEED PROBLEM SUMS

S/N	Key Concept	
1	Average Speed	
2	Same Direction	
3	Opposite Direction	
4	Journey with Common Distance/Time	



Assessment



Formative Assessment

I am      over my performance because

I need to work on the following area

- Multiplication & identifying pattern to find a product*
- Dividing by 10, 100 & 1000*
- Multiplication & rounding numbers to nearest 10, 100 or 1000*
- Problem solving involving four operations*
- Problem solving involving four operations using appropriate strategies*

I will _____

to improve on the areas of weakness.

Specific learning outcomes

Student's reflection

Page Number & Question Number	Learning Outcomes
WB Chapter 1 - Practice 1 • Pg 6 Qn 2,	Translate 6- and 7-digit numbers from: (i) numerals to words
WB Chapter 1 - Practice 1 • Qn 2	<div style="border: 1px solid black; background-color: #e0f0e0; padding: 10px; text-align: center;"> <h2>Appendix for pupils to refer to for revision</h2> </div>
WB Math Journal • Pg 8	
WB Chapter 1 - Practice 1 • Pg 5 Qn 1,	Translate 6- and 7-digit numbers from: (ii) words to numerals
WB Chapter 1 - Review • Pg 7 Qn 1, 4,	
WB Chapter 1 - Practice 1 • Pg 6 Qn 3,	Translate 6- and 7-digit numbers from: (iii) numerals or words to their expanded form
WB Chapter 1 - Review • Pg 7 Qn 3, 6, 7	



Summative Assessment

Weighted Assessment 1	Weighted Assessment 2	Preliminary Examination
----------------------------------	----------------------------------	------------------------------------



Summative Assessment

Primary 6 (Standard)	Weighted Assessment 1	Weighted Assessment 2
Date	Term 1 Week 9	Term 2 Week 7
Marks (Duration)	30 marks (50 min)	30 marks (50 min)
Topics	Whole Numbers Fractions	Ratio Area & Perimeter



Summative Assessment

Primary 6 (Foundation)	Weighted Assessment 1	Weighted Assessment 2
Date	Term 1 Week 9	Term 2 Week 7
Marks (Duration)	30 marks (50 min)	30 marks (50 min)
Topics	Fractions Decimals	Percentage Average Area of Triangles



Weighted Assessment Feedback

Qn	Learning objectives	Unable to apply correct math concept	Has partial understanding	Misread data/ computation errors
1	Converting a measurement from a smaller unit to a larger unit in decimal form, and vice versa			
2	Rounding decimals to the nearest whole number / 1 decimal / 2 decimal places			
3	Notation, representation and place values			
4	Expressing a part of a whole as a percentage			
5	Comparing and ordering decimals			
6	Multiplying and dividing decimals (up to 3 decimal places)			
7	Multiplying and dividing decimals (up to 3 decimal places)			
8	Finding a percentage part of a whole			
9	Finding a percentage part of a whole			
10	Finding discount, GST and annual interest			
11	Solving word problems involving the 4 operations (include heuristic skills - listing, working backwards, guess and check)			



P6 Standard - PSLE Exam Format

Paper	Booklet	Item Type	Number of questions	Number of marks per question	Total marks	Duration
1	A	Multiple-choice	10	1	10	1 h
			5	2	10	
	B	Short-answer	5	1	5	
			10	2	20	
2		Short-answer	5	2	10	1 h 30 min
		Structured/ Long-answer	12	3, 4 or 5	45	
Total			47	-	100	2 h 30 min



P6 Foundation - PSLE Exam Format

Paper	Booklet	Item Type	Number of questions	Number of marks per question	Total marks	Duration
1	A	Multiple-choice	10	1	10	1 h
			10	2	20	
	B	Short-answer	10	2	20	
2		Short-answer	10	2	20	1 h
		Structured	6	3 or 4	20	
Total			46	-	90	2 h



How can you help your child?

- Make math **Fun**
- Show the relevance of Math in real-life
- Provide a **supportive** environment
- **Be encouraging** and adopt a **positive mindset**,
celebrate every success!





Thank you!

